

# 4-way



Wide air flow in all directions



Every component for the air distribution was designed to guarantee the users the maximum flexibility of operation and the optimum air delivery in any conditions. The louver shape ensure uniform distribution and long air throw while the louver motors controls the direction and patterns of air flow.

4-way cassette is designed to provide uniform air distribution and total comfort; it is the ideal solution for small commercial applications.

Two louver shape options: straight flow louver and wide flow louver; optimum air distribution.

Light-weight unit, for easy and quick installation.

Built-in high-lift drain pump.

Self-cleaning function and the Ag-ion tip for anti-mould in drain cap.

Individual setting of louver position: 3 different Swing modes: standard, diagonally opposite, turn-around.

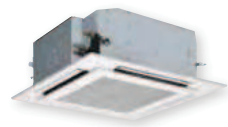
Wireless remote control and optional wired remote controller and timer.

Different panel option to blend easily in different ceiling design.

4-WAY CASSETTE

DI AND SDI INVERTER

S M \_ U T



**INDOOR UNITS**

RAV-SM564UT-E RAV-SM1104UT-E  
RAV-SM804UT-E RAV-SM1404UT-E  
RAV-SM1604UT-E

**OUTDOOR UNITS**

RAV-SP564AT-E  
RAV-SP804AT-E  
RAV-SP1104AT8-E  
RAV-SP1404AT8-E  
RAV-SP1604AT8-E

RAV-SM563AT-E  
RAV-SM803AT-E  
RAV-SM1103AT-E1  
RAV-SM1403AT-E1  
RAV-SM1603AT-E

With branching kits  
RAV-SM2244AT8-E  
RAV-SM2804AT8-E

**REMOTE CONTROLS**

Wireless  
TCB-AX32E2  
RBC-AX32U(W)-  
RBC-AX32U(WS)-E

Wired  
RBC-AMS51E-EN(ES)  
RBC-AMS41E  
RBC-AMT32E  
RBC-AS21E2

**SM\_UT + SP\_AT**

Performance data with Super Digital Inverter

| Outdoor unit                      | RAV-SP564AT-E | RAV-SP804AT-E         | RAV-SP1104AT-E     | RAV-SP1404AT8-E    | RAV-SP1604AT8-E    | RAV-SP1404AT8-E    | RAV-SP1604AT8-E    |
|-----------------------------------|---------------|-----------------------|--------------------|--------------------|--------------------|--------------------|--------------------|
| Indoor unit (Cassette)            | RAV-SM564UT-E | RAV-SM804UT-E         | RAV-SM1104UT-E     | RAV-SM1404UT-E     | RAV-SM1404UT-E     | RAV-SM1404UT-E     | RAV-SM1604UT-E     |
| Cooling capacity                  | kW            | 5,3                   | 7,1                | 10,0               | 12,5               | 12,5               | 14,0               |
| Cooling range (min. - max.)       | kW            | 1,2 - 5,6             | 1,9 - 8,0          | 2,6 - 12,0         | 2,6 - 12,0         | 2,6 - 14,0         | 2,6 - 16,0         |
| Power input (min. - rated - max.) | kW            | CO 0,20 - 1,47 - 1,95 | 0,30 - 1,86 - 2,52 | 0,64 - 2,21 - 3,88 | 0,66 - 2,37 - 3,60 | 0,64 - 3,16 - 4,21 | 0,66 - 3,46 - 4,40 |
| EER                               |               | 3,61                  | 3,82               | 4,52               | 4,22               | 3,96               | 3,61               |
| Energy efficiency class           | CO            | A                     | A                  | A                  | A                  | -                  | -                  |
| Annual energy consumption         | kWh           | 735                   | 930                | 1105               | 1185               | 1580               | 1730               |
| Heating capacity                  | kW            | 5,6                   | 8,0                | 11,2               | 11,2               | 14,0               | 16,0               |
| Heating range (min. - max.)       | kW            | 0,9 - 8,1             | 1,3 - 11,3         | 2,4 - 13,0         | 2,4 - 15,6         | 2,4 - 16,5         | 2,4 - 19,0         |
| Power input (min. - rated - max.) | kW            | HP 0,15 - 1,21 - 2,40 | 0,25 - 1,91 - 3,52 | 0,52 - 2,34 - 3,75 | 0,53 - 2,42 - 4,30 | 0,52 - 3,21 - 4,50 | 0,53 - 3,42 - 5,50 |
| COP                               |               | 4,63                  | 4,19               | 4,79               | 4,63               | 4,36               | 4,09               |
| Energy efficiency class           | HP            | A                     | A                  | A                  | A                  | -                  | -                  |

**SM\_UT + SM\_AT**

Performance data with Digital Inverter

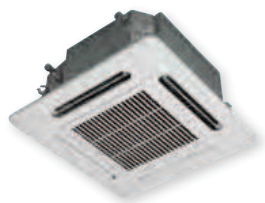
| Outdoor unit                      | RAV-SM563AT-E | RAV-SM803AT-E         | RAV-SM1103AT-E1    | RAV-SM1403AT-E1    | RAV-SM1603AT-E     |
|-----------------------------------|---------------|-----------------------|--------------------|--------------------|--------------------|
| Indoor unit (4-way Cassette)      | RAV-SM564UT-E | RAV-SM804UT-E         | RAV-SM1104UT-E     | RAV-SM1404UT-E     | RAV-SM1604UT-E     |
| Cooling capacity                  | kW            | 5,3                   | 6,7                | 10,0               | 12,0               |
| Cooling range (min. - max.)       | kW            | 1,5 - 5,6             | 1,5 - 8,0          | 3,0 - 11,2         | 3,0 - 13,2         |
| Power input (min. - rated - max.) | kW            | CO 0,35 - 1,65 - 1,86 | 0,45 - 2,09 - 2,60 | 0,60 - 3,11 - 4,10 | 0,65 - 3,74 - 4,50 |
| EER                               |               | 3,21                  | 3,21               | 3,22               | 3,21               |
| Energy efficiency class           | CO            | A                     | A                  | A                  | A                  |
| Annual energy consumption         | kWh           | 825                   | 1045               | 1555               | 1870               |
| Heating capacity                  | kW            | 5,6                   | 8,0                | 11,2               | 14,0               |
| Heating range (min. - max.)       | kW            | 1,5 - 6,3             | 1,5 - 9,0          | 3,0 - 13,0         | 3,0 - 16,0         |
| Power input (min. - rated - max.) | kW            | HP 0,35 - 1,44 - 2,08 | 0,45 - 2,21 - 3,03 | 0,60 - 2,93 - 4,30 | 0,65 - 3,80 - 4,50 |
| COP                               |               | 3,89                  | 3,62               | 3,82               | 3,68               |
| Energy efficiency class           | HP            | A                     | A                  | A                  | A                  |

**SM\_UT**

Physical data Indoor unit

| Indoor unit                  | RAV-SM564UT-E           | RAV-SM804UT-E      | RAV-SM1104UT-E     | RAV-SM1404UT-E      | RAV-SM1604UT-E      |
|------------------------------|-------------------------|--------------------|--------------------|---------------------|---------------------|
| Air Flow (H/L)               | m <sup>3</sup> /h - l/s | 1050/780 - 291/217 | 1230/810 - 341/225 | 2010/1170 - 558/325 | 2100/1230 - 583/341 |
| Sound pressure level (H-M-L) | dB(A)                   | 32-29-28           | 35-31-28           | 43-38-33            | 44-38-34            |
| Sound power level (H-M-L)    | dB(A)                   | 47-44-43           | 50-46-43           | 58-53-48            | 59-53-49            |
| Dimensions (HxWxD)           | mm                      | 256 x 840 x 840    | 256 x 840 x 840    | 319 x 840 x 840     | 319 x 840 x 840     |
| Weight                       | kg                      | 20                 | 20                 | 24                  | 24                  |
| Panel dimensions (HxWxD)     | mm                      | 30x950x950         | 30x950x950         | 30x950x950          | 30x950x950          |
| Panel weight                 | kg                      | 4,2                | 4,2                | 4,2                 | 4,2                 |

CO = cooling mode  
HP = heating mode  
H-M-L = High - Medium - Low speed



Corner pockets opening



Ease of access to the corner pockets facilitates installation and small adjustment of the panel alignment for perfect ceiling fitting.

This 4-way cassette has been especially designed for small commercial applications where a compact efficient unit is needed.

Fit all standard 600x600 mm grid ceilings; one single chassis dimension for all the available capacities.

Draught prevention, slim function and clean ceiling functions make this unit ideal for a large number of applications.

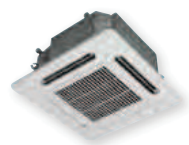
Built-in water condensate discharge drain pump.

TCC Link control panel makes control of the system flexible and simplifies maintenance.

COMPACT 4-WAY CASSETTE

DI AND SDI INVERTER

SM\_MUT



INDOOR UNITS

RAV-SM404MUT-E  
RAV-SM454MUT-E  
RAV-SM564MUT-E



OUTDOOR UNITS

RAV-SP404AT-E  
RAV-SP454AT-E  
RAV-SP564AT-E



RAV-SM563AT-E



With branching kits  
RAV-SM2244AT8-E  
RAV-SM2804AT8-E



Wireless  
TCB-AX32E2



Wired  
RBC-AMS51E-EN(ES)  
RBC-AMS41E  
RBC-AMT32E  
RBC-AS21E2

SM\_MUT + SP\_AT

Performance data with Super Digital Inverter

| Outdoor unit                      |       | RAV-SP404AT-E      | RAV-SP454AT-E      | RAV-SP564AT-E      |
|-----------------------------------|-------|--------------------|--------------------|--------------------|
| Indoor unit (600x600 Cassette)    |       | RAV-SM404MUT-E     | RAV-SM454MUT-E     | RAV-SM564MUT-E     |
| Cooling capacity                  | kW    | 3,6                | 4,0                | 5,0                |
| Cooling range (min. - max.)       | kW    | 1,5 - 4,0          | 1,5 - 4,5          | 1,2 - 5,6          |
| Power input (min. - rated - max.) | kW CO | 0,36 - 1,00 - 1,49 | 0,36 - 1,19 - 1,49 | 0,21 - 1,56 - 2,29 |
| EER                               | W/W   | 3,60               | 3,36               | 3,21               |
| Energy efficiency class           | CO    | A                  | A                  | A                  |
| Annual energy consumption         | kWh   | 500                | 595                | 780                |
| Heating capacity                  | kW    | 4,0                | 4,5                | 5,6                |
| Heating range (min. - max.)       | kW    | 1,5 - 5,0          | 1,5 - 5,6          | 0,9 - 7,4          |
| Power input (min. - rated - max.) | kW HP | 0,36 - 0,97 - 2,20 | 0,36 - 1,16 - 2,30 | 0,17 - 1,54 - 2,37 |
| COP                               | W/W   | 4,12               | 3,88               | 3,64               |
| Energy efficiency class           | HP    | A                  | A                  | A                  |

SM\_MUT + SM\_AT

Performance data with Digital Inverter

| Outdoor unit                   |       | RAV-SM563AT-E      |
|--------------------------------|-------|--------------------|
| Indoor unit (600x600 Cassette) |       | RAV-SM564MUT-E     |
| Cooling capacity               | kW    | 5,0                |
| Cooling range (min. - max.)    | kW    | 1,5 - 5,6          |
| Power input                    | kW CO | 0,40 - 1,61 - 1,86 |
| EER                            | W/W   | 3,11               |
| Energy efficiency class        | CO    | B                  |
| Annual energy consumption      | kWh   | 805                |
| Heating capacity               | kW    | 5,6                |
| Heating range (min. - max.)    | kW    | 1,5 - 6,3          |
| Power input                    | kW HP | 0,40 - 1,61 - 2,40 |
| COP                            | W/W   | 3,48               |
| Energy efficiency class        | HP    | B                  |

SM\_MUT

Physical data Indoor units

| Indoor unit                  |                         | RAV-SM404MUT-E    | RAV-SM454MUT-E    | RAV-SM564MUT-E    |
|------------------------------|-------------------------|-------------------|-------------------|-------------------|
| Air Flow (H/L)               | m <sup>3</sup> /h - l/s | 660/468 - 183/130 | 660/468 - 183/130 | 798/546 - 222/152 |
| Sound pressure level (H-M-L) | dB(A)                   | 40-36-31          | 40-36-31          | 43-39-34          |
| Sound power level (H-M-L)    | dB(A)                   | 55-51-46          | 55-51-46          | 58-54-49          |
| Dimensions (HxWxD)           | mm                      | 268x575x575       | 268x575x575       | 268x575x575       |
| Weight                       | kg                      | 16                | 16                | 16                |
| Panel dimensions (HxWxD)     | mm                      | 27x700x700        | 27x700x700        | 27x700x700        |
| Panel weight                 | kg                      | 3                 | 3                 | 3                 |

CO = cooling mode  
HP = heating mode  
H-M-L = High - Medium - Low speed